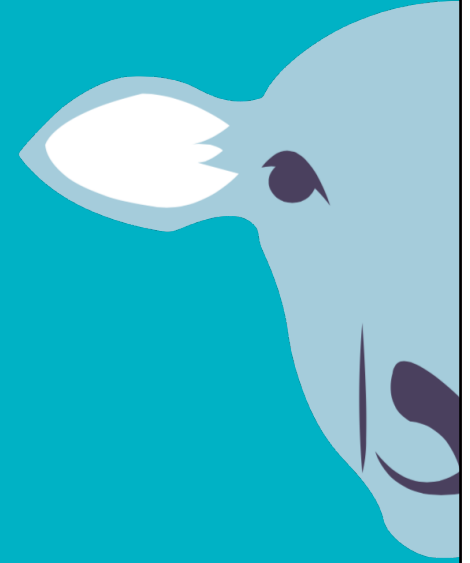




**B+LNZ GENETICS**  
**SHEEP BREEDER FORUM**

**2016**



# **SIL Developments**

**Better access to better information**

Dr Mark Young, B+LNZ Genetics

# Out now

- **BLG Genetics Extension Officers**
  - Annie O'Connell & Max Tweedie
- **SIL Industry Advisory Group**  
(programme book - p24)
- **Industry Standard Indexes**
  - NZ Maternal Worth
  - NZ Terminal Worth
- **Revised Lamb Survival evaluation**
  - Extreme data exclusion

# Near release

- **SIL GE upgrade**
  - Stage 2: bigger datasets, “groups” fitted
  - **NZGE** will be new all-SIL evaluation for routine reporting
- Rules for using connectedness to guide reporting
- **Best Practice Guidelines** for recording in ram breeding flocks
- *Economic weightings for ewe BCS & stayability*



# Under development

- **SIL GE upgrade**
  - Stage 3: integrate DNA data into single-step analysis
- **SIL genotype database**
  - Automate parentage verification
- **Meat Yield revision**
- **Next generation indexes**
  - To cope with traits that have optimum
  - Add in more economically important traits
- **CPT revision**
- **Annual Sheep Genetics Report**
  - To replace CPT Results booklet

# Developments planned

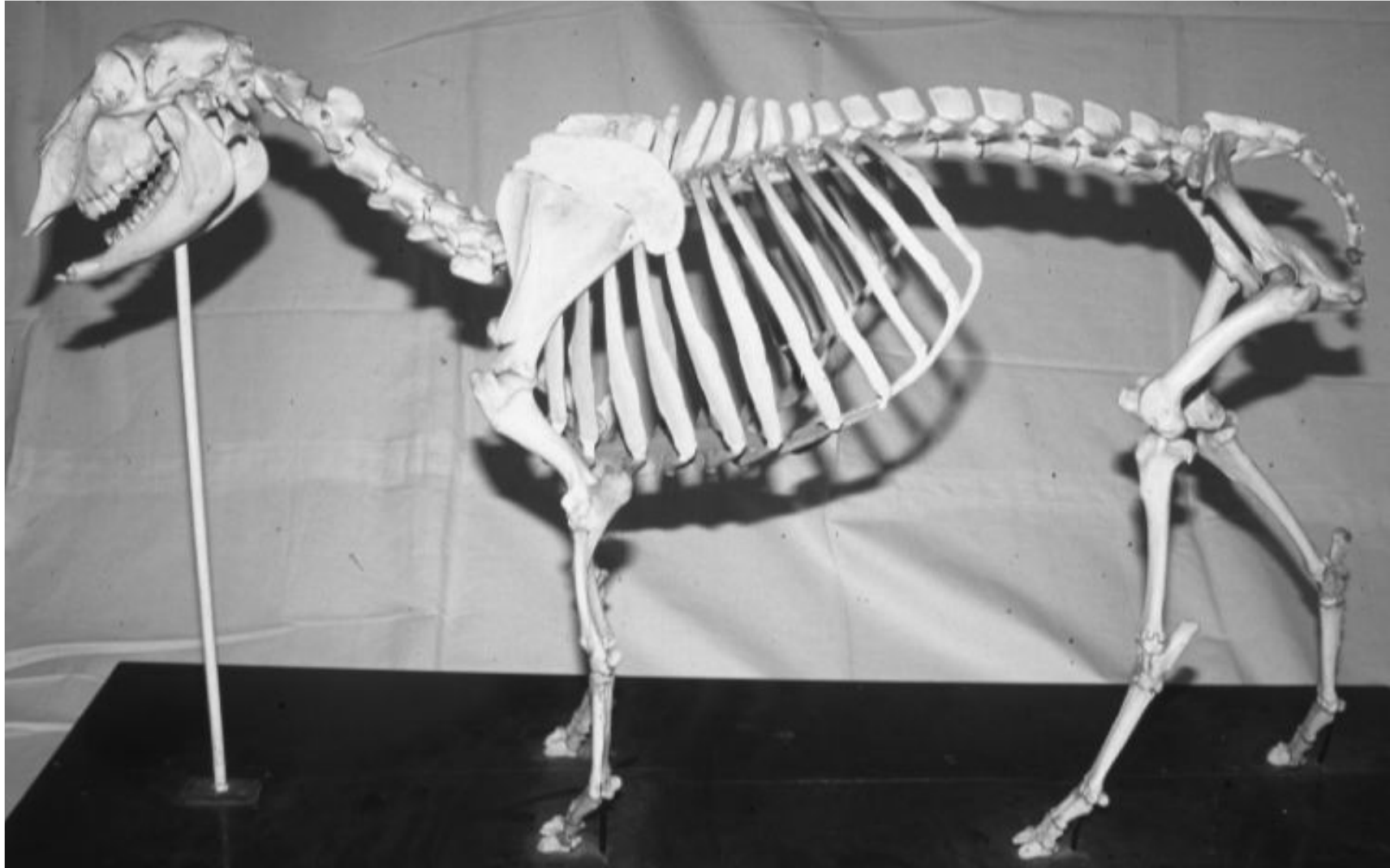
- **Upgrade FlockFinder app**
  - More traits
  - Report on genetic variation in flocks
  - Show flock genetic trends?
- **Rebuild RamFinder app**
  - ease of use & focused results
- **Build connectedness into SIL Report Writer**
- **Automatically generate summary of NZGE runs for QA and to support user query resolution**
- **Revise feed costs in economic objectives & BV indicators**
- **Ram Buying Tools**

# SIL Meat Yield revision

- Carcass shape
- Muscularity
- IMF% ?
- Align with commercial carcass assessment systems



# BCS and stayability?



**Muscularity!** *Topic in this afternoon's workshop*



**THANK YOU**